

Maxseal Instrument Changeover and Process Control Valve for Hazardous Areas EEx d



Model ICO4S 1/4"

Certification

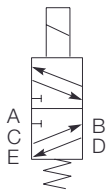


II 2G
 EECS (BASEEFA) / SIRA CENELEC approved
 EEx d IIC T6 ($T_a = -60^{\circ}\text{C}$ to $+48^{\circ}\text{C}$) or
 EEx d IIC T4 ($T_a = -60^{\circ}\text{C}$ to $+90^{\circ}\text{C}$)
 Complies with EN 50014:1997 (amendments 1 and 2) and EN 50018:1994
 Complies with ATEX Directive 94/9/EC
 FM approved to Class I Division 1 Groups A. B. C. D

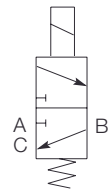
Description

A direct-acting solenoid valve certified for hazardous area use as well as general air and gas purposes in the offshore and petrochemical industries.

5-port



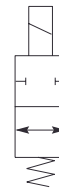
3-port



2-port, EO



2-port, EC



Standard Features

| | |
|------------------------|--|
| Port thread | 1/4" NPT |
| Port configuration | 3/2 Uni |
| Operating pressure | 0 - 20 bar(g) (0 - 290 psi) |
| Actuation method | Automatic |
| Valve material | Stainless steel BS EN 10088 |
| Seat / Seal material | High nitrile (Buna N) |
| Operating voltage | 24V DC; 4.5W at 20°C (68°F) |
| Conduit / Signal entry | M20 x 1.5 mm ISO (F) |
| Paint finish | Unpainted |
| Coil housing material | Stainless steel BS 3146 ANC.4 BFC.316 |
| Weight | 3-port version: 5 kg (11 lb) |
| Cv value | 0.8 (Kv 0.69) |

Options

| | |
|------------------------|--|
| Port thread | 1/4" BSPP; 1/4" BSPT |
| Port configuration | 5/2 Uni; 2/2 EO; 2/2 EC |
| Actuation method | Autolatch, lever manual reset (LMR), lever manual override (LMO), tamperproof manual reset (see "Optional Valve Features") |
| Valve material | Brass BS EN 12163: 1998 |
| Seat / Seal material | Viton®, nylon 66 (high pressure seat only) Alternative materials available on request |
| Operating voltages | DC: 12, 24, 48, 110, 125, 240 AC: 24, 50, 110, 240, 440 |
| Conduit / Signal entry | 1/2" NPT, 13.5 PG |
| CV value | 0 - 50 bar(g) (0 - 725 psi) = 0.6 (Kv = 0.5) 0 - 103/207 bar(g) (0 - 1494/3000 psi) = 0.28 (Kv = 0.24) |

Viton® is a registered trademark of DuPont Dow Elastomers LLC.



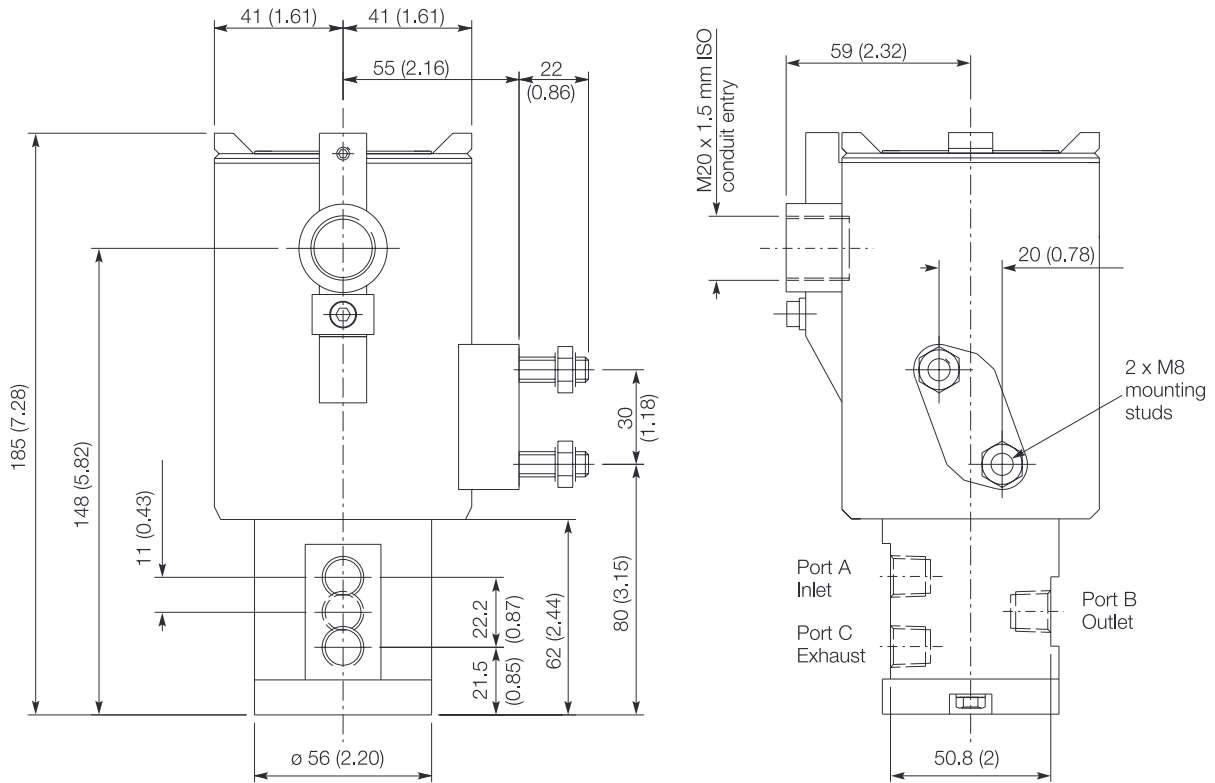
Maxseal
Instrument Changeover and Process Control Valve for Hazardous Areas
EEx d
ICO4S 1/4"

Technical Specification

| | | |
|---|--|--|
| Protection | Ingress IP65 / X8. NEMA 4X Surge suppression diodes | |
| Response times (typical, dependent on coil size) | Pull-in < 150 ms Drop-out < 80 ms | |
| Response times settings | Pull-in: within 87.5% of nominal (factory set at less than 75% of nominal) Drop-out: normally 10-20% of nominal | |
| Operating pressure ranges | 0 - 20 bar(g) (0 - 290 psi) (standard) 0 - 50 bar(g) (0 - 725 psi) (option) 0 - 103 bar(g) (0 - 1494 psi) (option) 0 - 207 bar(g) (0 - 3000 psi) (option) | |

Dimensions in mm (inches)

(3/2 Uni configuration illustrated)



We recommend installing a strainer or filter as close as possible to valve inlet. While protecting seating areas from potential damage, this helps maintain **air quality** - Talk to us about filtration!